

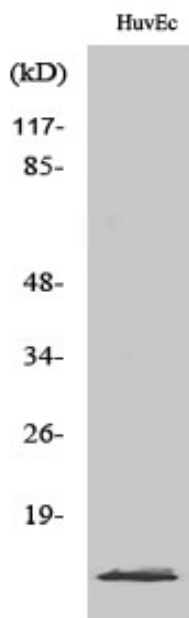


# PIG11 Polyclonal Antibody

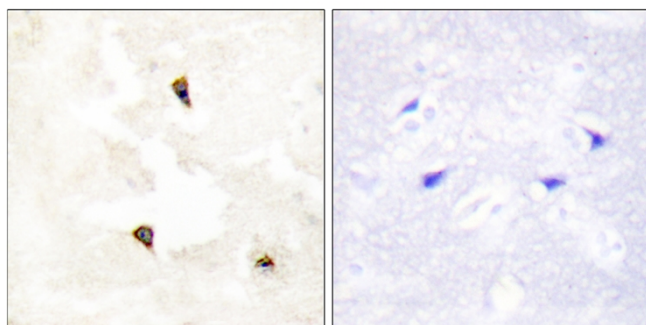
<b>Catalog No</b>	YP-Ab-00493
<b>Isotype</b>	IgG
<b>Reactivity</b>	Human;Rat;Mouse;
<b>Applications</b>	WB;IHC;IF;ELISA
<b>Gene Name</b>	TP53I11
<b>Protein Name</b>	Tumor protein p53-inducible protein 11
<b>Immunogen</b>	The antiserum was produced against synthesized peptide derived from human TP53I11. AA range:71-120
<b>Specificity</b>	PIG11 Polyclonal Antibody detects endogenous levels of PIG11 protein.
<b>Formulation</b>	Liquid in PBS containing 50% glycerol, 0.5% BSA and 0.02% sodium azide.
<b>Source</b>	Polyclonal, Rabbit,IgG
<b>Purification</b>	The antibody was affinity-purified from rabbit antiserum by affinity-chromatography using epitope-specific immunogen.
<b>Dilution</b>	Western Blot: 1/500 - 1/2000. Immunohistochemistry: 1/100 - 1/300. Immunofluorescence: 1/200 - 1/1000. ELISA: 1/20000. Not yet tested in other applications.
<b>Concentration</b>	1 mg/ml
<b>Purity</b>	≥90%
<b>Storage Stability</b>	-20°C/1 year
<b>Synonyms</b>	TP53I11; PIG11; Tumor protein p53-inducible protein 11; p53-induced gene 11 protein
<b>Observed Band</b>	18kD
<b>Cell Pathway</b>	Membrane ; Multi-pass membrane protein .
<b>Tissue Specificity</b>	Brain,Testis,Trachea,
<b>Function</b>	
<b>Background</b>	TP53I11 (Tumor Protein P53 Inducible Protein 11) is a Protein Coding gene.
<b>matters needing attention</b>	Avoid repeated freezing and thawing!
<b>Usage suggestions</b>	This product can be used in immunological reaction related experiments. For more information, please consult technical personnel.



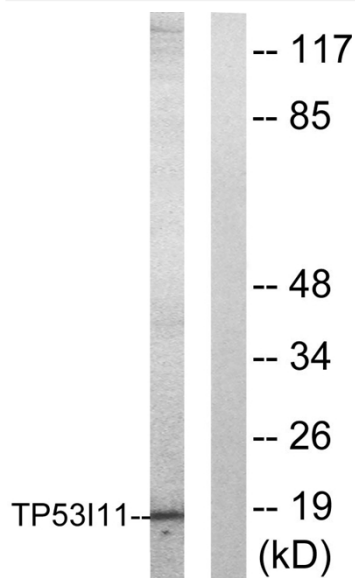
## Products Images



Western Blot analysis of various cells using PIG11 Polyclonal Antibody



Immunohistochemistry analysis of paraffin-embedded human breast carcinoma tissue, using TP53I11 Antibody. The picture on the right is blocked with the synthesized peptide.



Western blot analysis of lysates from HUVEC cells, using TP53I11 Antibody. The lane on the right is blocked with the synthesized peptide.